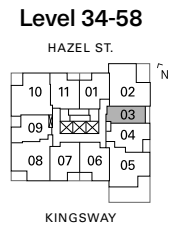
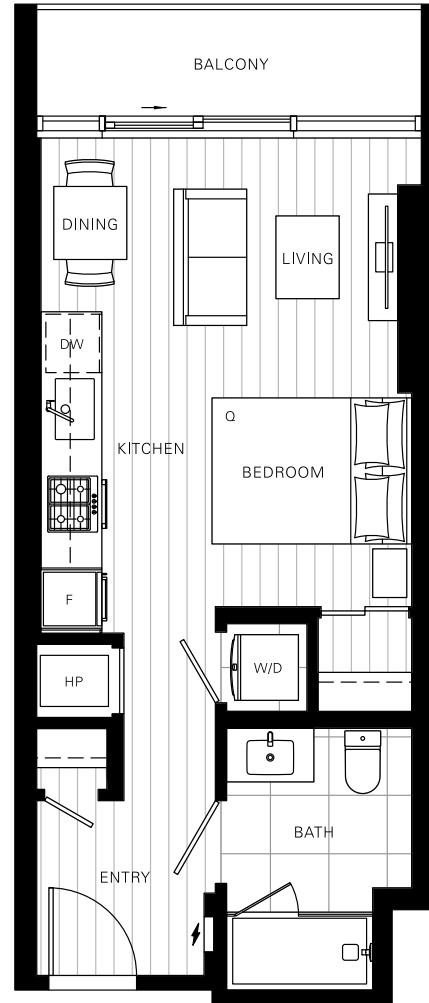


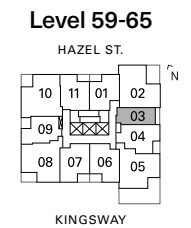
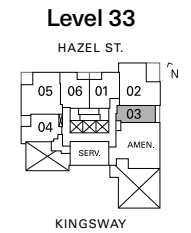
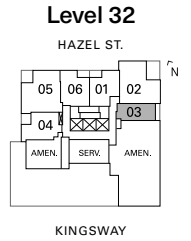
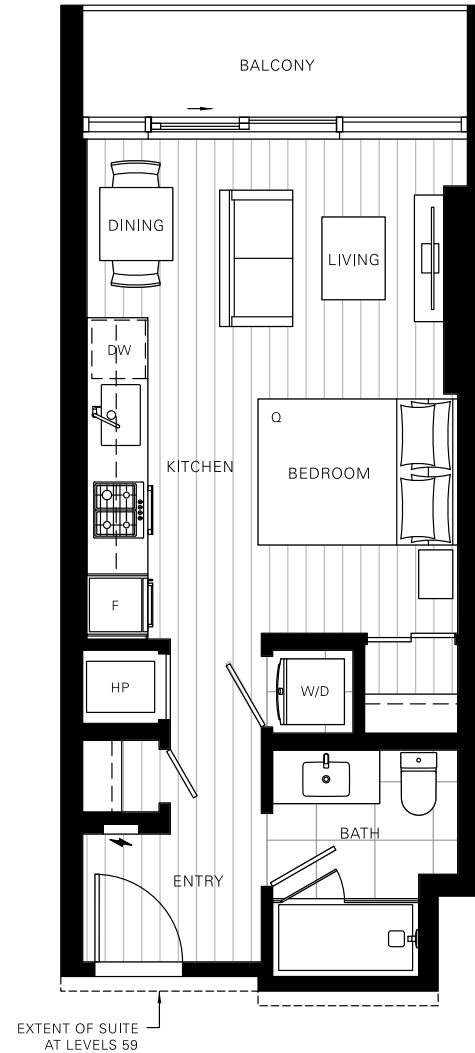
Plan A1a Studio



Interior: 409 sf
 Exterior: 50 sf
 Total: 459 sf

The developer reserves the right to make changes and modifications to the information contained herein. Floorplans and floorplates are subject to change without notice. Please contact a developer sales representative for details. This is not an offering for sale, as an offering can only be made after the filing of a disclosure statement, and only in jurisdictions where qualified in accordance with applicable local laws. E.&O.E.

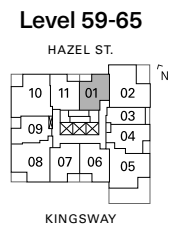
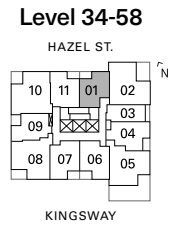
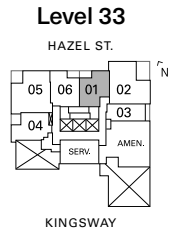
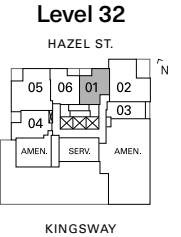
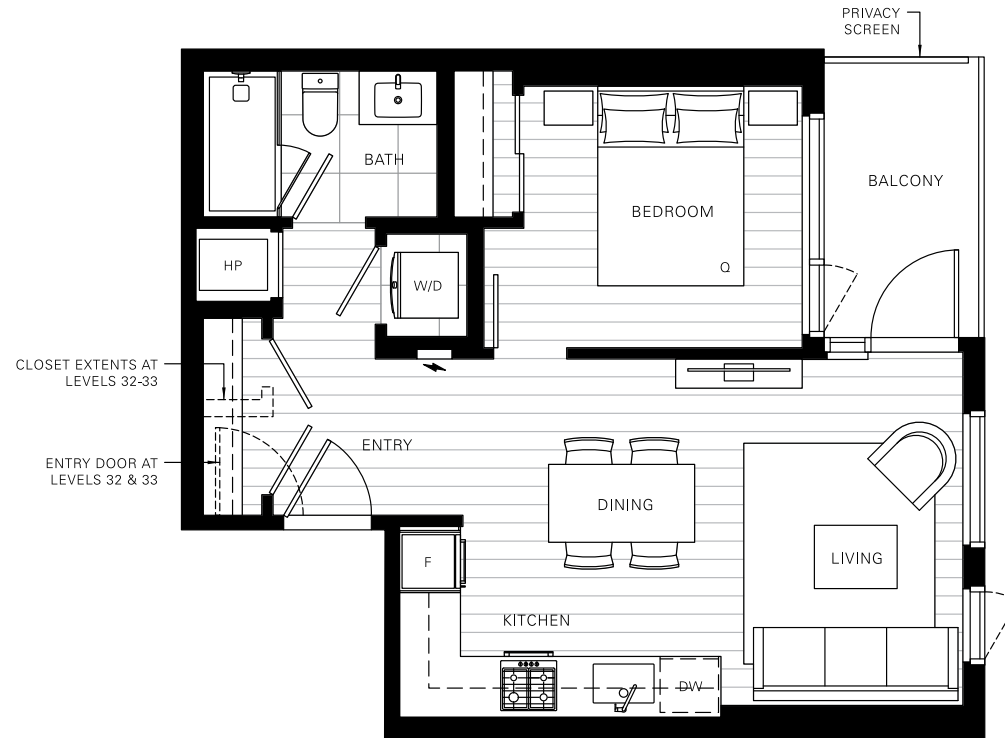
Plan A1b Studio



Interior: 409-411 sf
Exterior: 50 sf
Total: 459-461 sf

The developer reserves the right to make changes and modifications to the information contained herein. Floorplans and floorplates are subject to change without notice. Please contact a developer sales representative for details. This is not an offering for sale, as an offering can only be made after the filing of a disclosure statement, and only in jurisdictions where qualified in accordance with applicable local laws. E.&O.E.

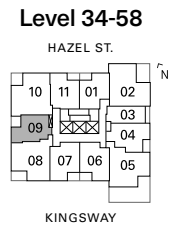
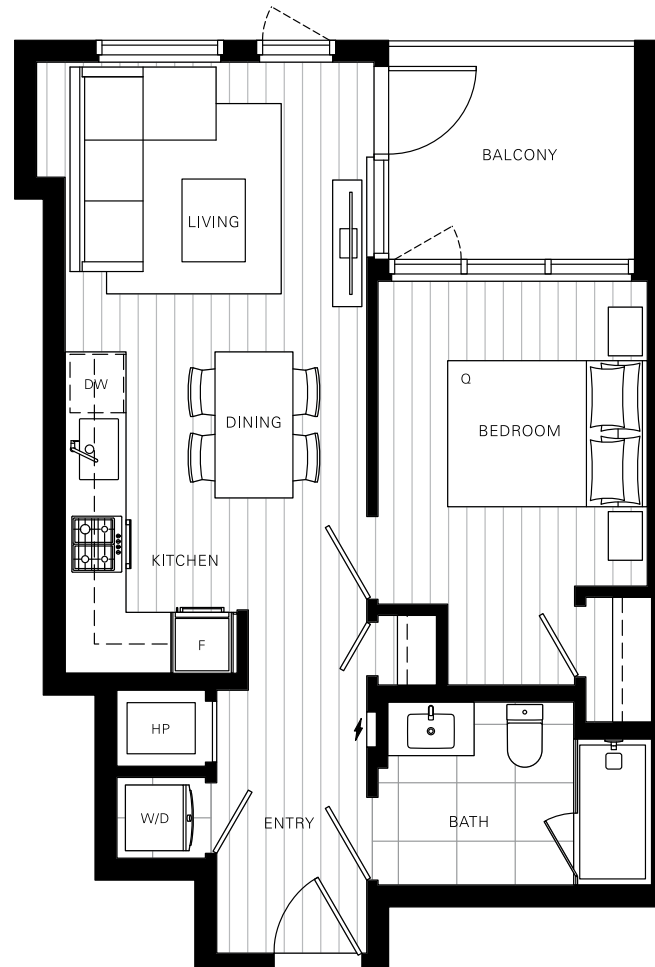
Plan B 1-Bedroom



Interior: 521-529 sf
 Exterior: 52 sf
 Total: 573-581 sf

The developer reserves the right to make changes and modifications to the information contained herein. Floorplans and floorplates are subject to change without notice. Please contact a developer sales representative for details. This is not an offering for sale, as an offering can only be made after the filing of a disclosure statement, and only in jurisdictions where qualified in accordance with applicable local laws. E.&O.E.

Plan B1a 1-Bedroom

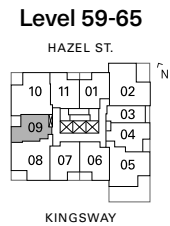
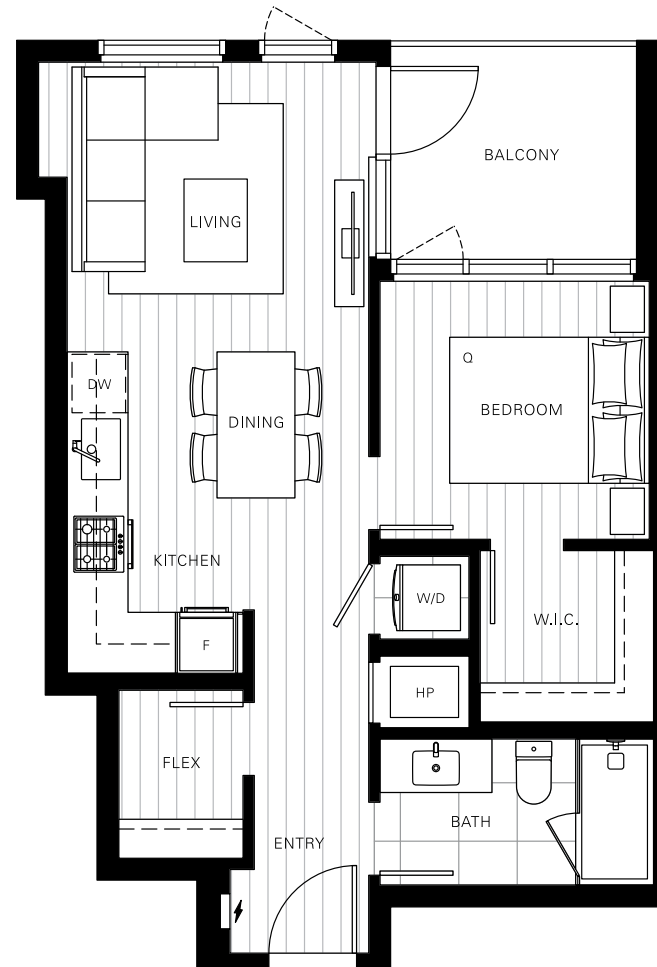


Interior: 548 sf
Exterior: 63 sf
Total: 611 sf

The developer reserves the right to make changes and modifications to the information contained herein. Floorplans and floorplates are subject to change without notice. Please contact a developer sales representative for details. This is not an offering for sale, as an offering can only be made after the filing of a disclosure statement, and only in jurisdictions where qualified in accordance with applicable local laws. E.&O.E.

Plan B1b

1-Bedroom + Flex

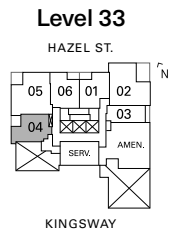
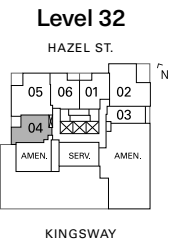
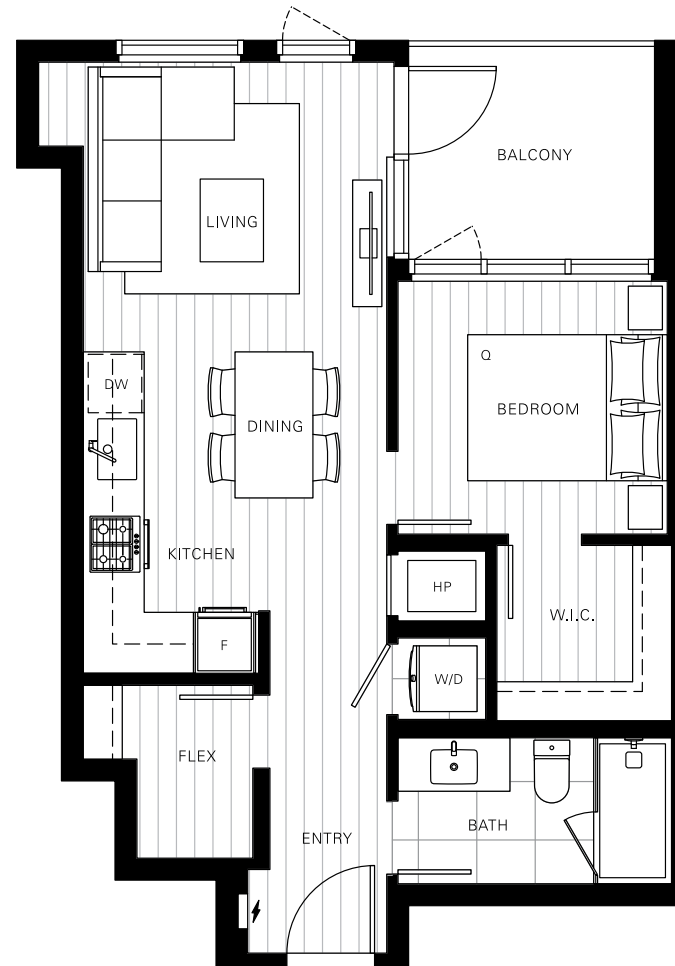


Interior: 548 sf
 Exterior: 63 sf
 Total: 611 sf

The developer reserves the right to make changes and modifications to the information contained herein. Floorplans and floorplates are subject to change without notice. Please contact a developer sales representative for details. This is not an offering for sale, as an offering can only be made after the filing of a disclosure statement, and only in jurisdictions where qualified in accordance with applicable local laws. E.&O.E.

Plan B2

1-Bedroom + Flex

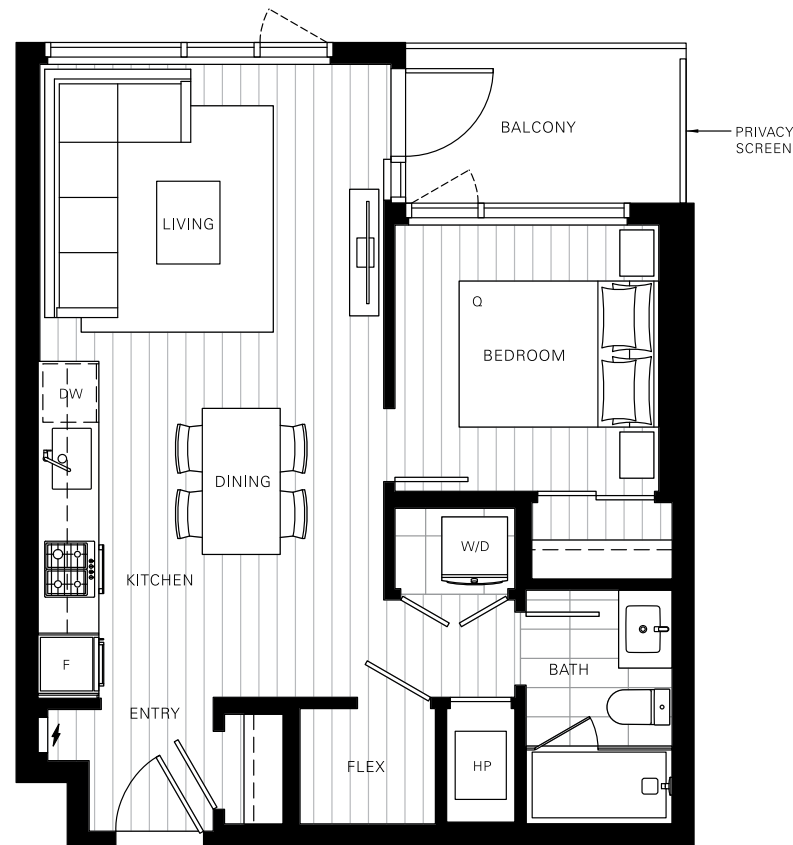


Interior: 574 sf
 Exterior: 63 sf
 Total: 637 sf

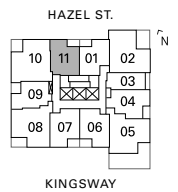
The developer reserves the right to make changes and modifications to the information contained herein. Floorplans and floorplates are subject to change without notice. Please contact a developer sales representative for details. This is not an offering for sale, as an offering can only be made after the filing of a disclosure statement, and only in jurisdictions where qualified in accordance with applicable local laws. E.&O.E.

Plan B4

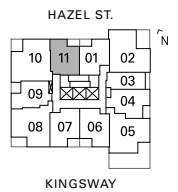
1-Bedroom + Flex



Level 34-58



Level 59-65

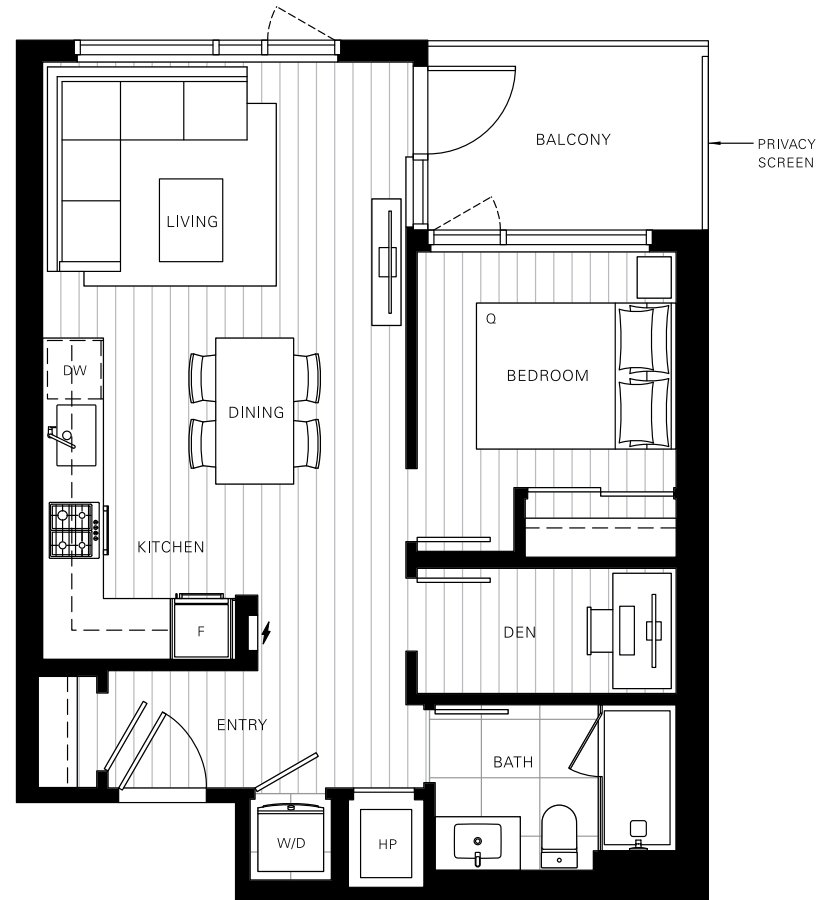


Interior: 561 sf
 Exterior: 52 sf
 Total: 613 sf

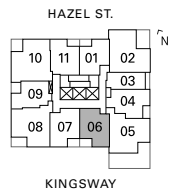
The developer reserves the right to make changes and modifications to the information contained herein. Floorplans and floorplates are subject to change without notice. Please contact a developer sales representative for details. This is not an offering for sale, as an offering can only be made after the filing of a disclosure statement, and only in jurisdictions where qualified in accordance with applicable local laws. E.&O.E.

Plan C

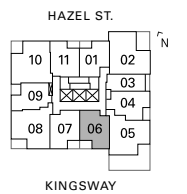
1-Bedroom + Den



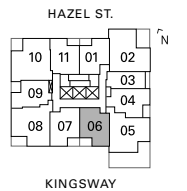
Level 34-51



Level 52-58



Level 59-65



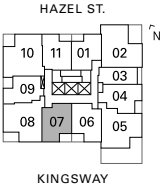
Interior: 597 sf
 Exterior: 62 sf
 Total: 659 sf

The developer reserves the right to make changes and modifications to the information contained herein. Floorplans and floorplates are subject to change without notice. Please contact a developer sales representative for details. This is not an offering for sale, as an offering can only be made after the filing of a disclosure statement, and only in jurisdictions where qualified in accordance with applicable local laws. E.&O.E.

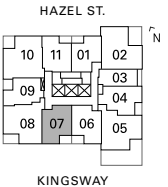
Plan C1 1-Bedroom + Den



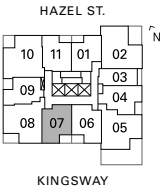
Level 34-51



Level 52-58



Level 59-65

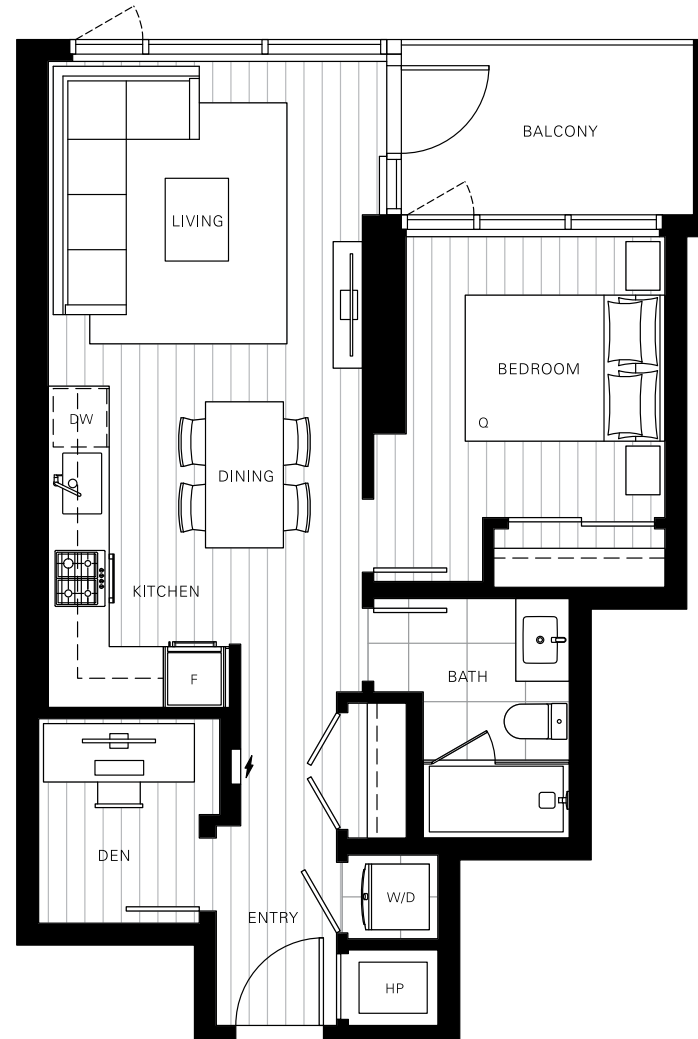


Interior: 601 sf
 Exterior: 62 sf
 Total: 663 sf

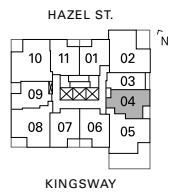
The developer reserves the right to make changes and modifications to the information contained herein. Floorplans and floorplates are subject to change without notice. Please contact a developer sales representative for details. This is not an offering for sale, as an offering can only be made after the filing of a disclosure statement, and only in jurisdictions where qualified in accordance with applicable local laws. E.&O.E.

Plan C2

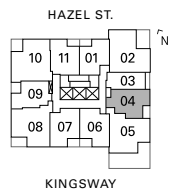
1-Bedroom + Den



Level 34-58



Level 59-65



Interior: 607 sf
 Exterior: 60 sf
 Total: 667 sf

The developer reserves the right to make changes and modifications to the information contained herein. Floorplans and floorplates are subject to change without notice. Please contact a developer sales representative for details. This is not an offering for sale, as an offering can only be made after the filing of a disclosure statement, and only in jurisdictions where qualified in accordance with applicable local laws. E.&O.E.

Plan D 2-Bedroom + Den



Level 34-58



Level 59-65



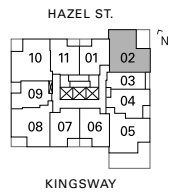
Interior: 834 sf
 Exterior: 91 sf
 Total: 925 sf

The developer reserves the right to make changes and modifications to the information contained herein. Floorplans and floorplates are subject to change without notice. Please contact a developer sales representative for details. This is not an offering for sale, as an offering can only be made after the filing of a disclosure statement, and only in jurisdictions where qualified in accordance with applicable local laws. E.&O.E.

Plan D2a 2-Bedroom + Den



Level 34-58



Interior: 871 sf
 Exterior: 152 sf
 Total: 1,023 sf

The developer reserves the right to make changes and modifications to the information contained herein. Floorplans and floorplates are subject to change without notice. Please contact a developer sales representative for details. This is not an offering for sale, as an offering can only be made after the filing of a disclosure statement, and only in jurisdictions where qualified in accordance with applicable local laws. E.&O.E.